



คณะการแพทย์บูรณาการ
Faculty of Integrative Medicine, RMUTT

Herbal Product Development



Name: Asst. Prof. Narintorn Pansawat

Education: M.S. (Anatomy)

Author ID: -

ORCID ID: 0009-0006-3580-131X

Contact: 668-5234-1527

E-mail: nar int orn_p@ rmut t.a c.th

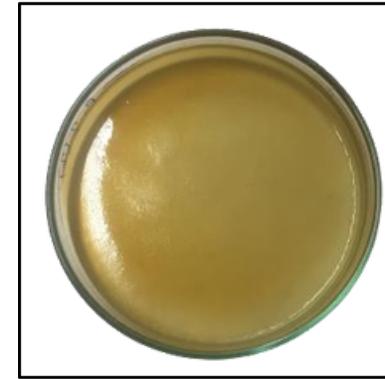
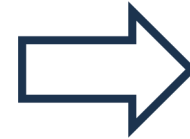
Research Interest

- Applied Thai Traditional Medicine
- Herbal Product development
- phytochemical analysis

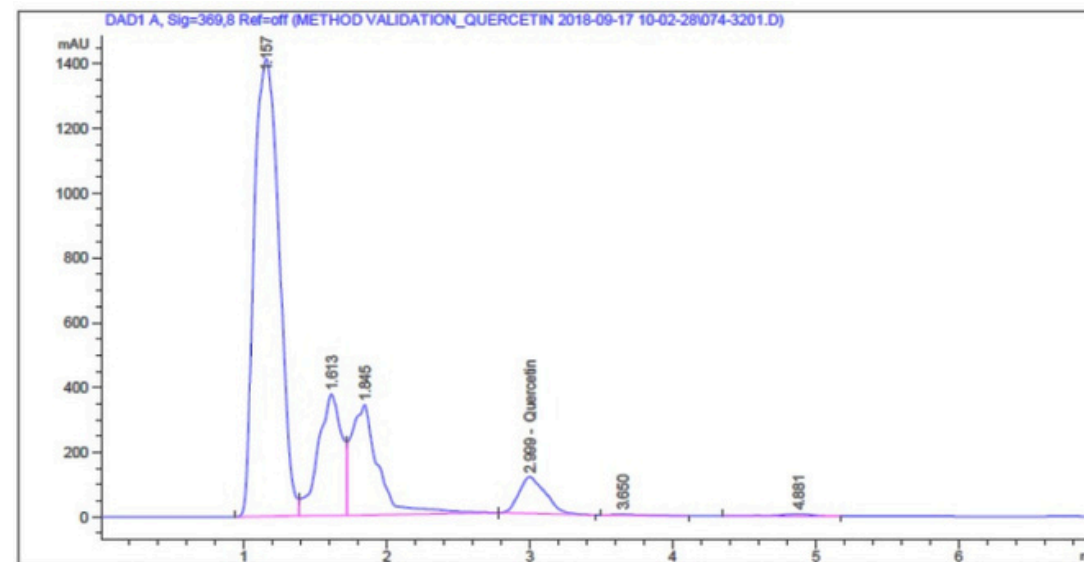
- Extraction
- Phytochemical analysis



Allium ascalonicum L.



Herbal patches



In a study on quercetin dosage, it was discovered that soxhlet extraction of shallot extract produced more quercetin than steam distillation

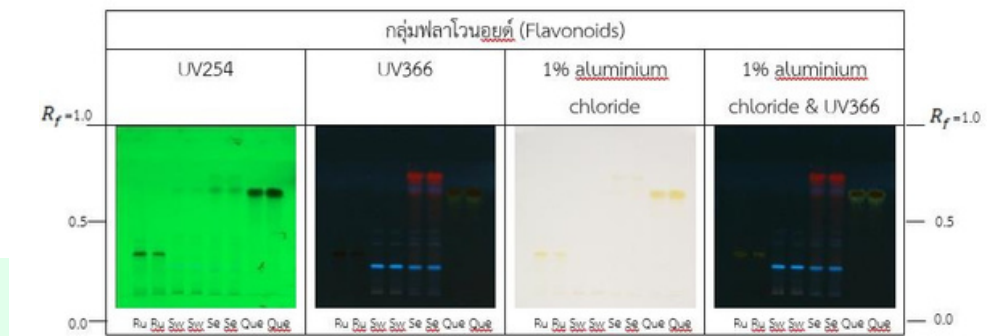
Herbal Product



- Herbal Product development



Eleutherine americana (Aubl.) Merr.



Phytochemical screening investigated of ethanol extract had 5 groups as alkaloids, flavonoids, tannins, terpenoids and steroids